

Argentinian mortality data quality assessment

Ivan Williams & Tim Riffe

Max Planck Institute for Demographic Research

May 2019

Why

- Population: 45 MM -> 10% of Latin America (UN, 2015)

Why

- Population: 45 MM -> 10% of Latin America (UN, 2015)
- No annual series. Available death data: 1990-2015

Why

- Population: 45 MM -> 10% of Latin America (UN, 2015)
- No annual series. Available death data: 1990-2015
- International researchers use and compare Argentinian mortality

Objectives and Method

- Objective

Objectives and Method

- Objective
 - Test *raw* data to construct a *life table serie* with HMD protocol

Objectives and Method

- Objective
 - Test **raw** data to construct a **life table serie** with HMD protocol
- Method:

Objectives and Method

- Objective
 - Test *raw* data to construct a *life table serie* with HMD protocol
- Method:
 - Sources and tabulations

Objectives and Method

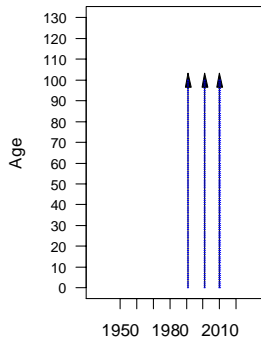
- Objective
 - Test *raw* data to construct a *life table serie* with HMD protocol
- Method:
 - Sources and tabulations
 - HMD protocol

Objectives and Method

- Objective
 - Test *raw* data to construct a *life table serie* with HMD protocol
- Method:
 - Sources and tabulations
 - HMD protocol
 - Multidimensional quality checks respect HMD profile and other estimates

Population Data

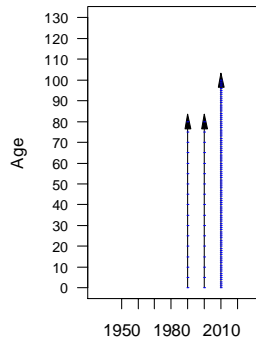
Census



Year

Source: INDEC

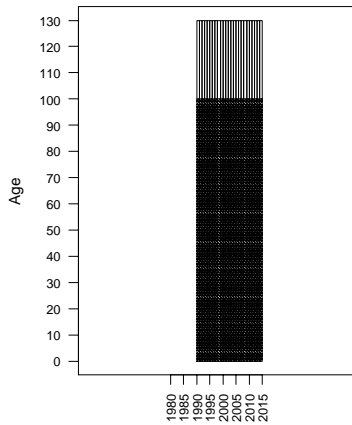
Official Estimates



Year

Source: INDEC

Deaths



Source: MH

Unknown data:

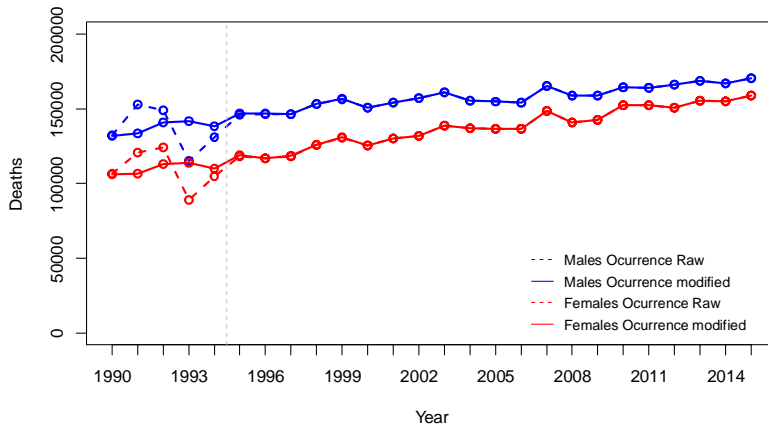
Ages: Max 1.8% in 1993

Sex: Max 1.4% in 1997

Year Occurr: Max. 1.4% in 1997

Ocurrence data

Deaths by Sex in Argentina



Some Indirect Measures

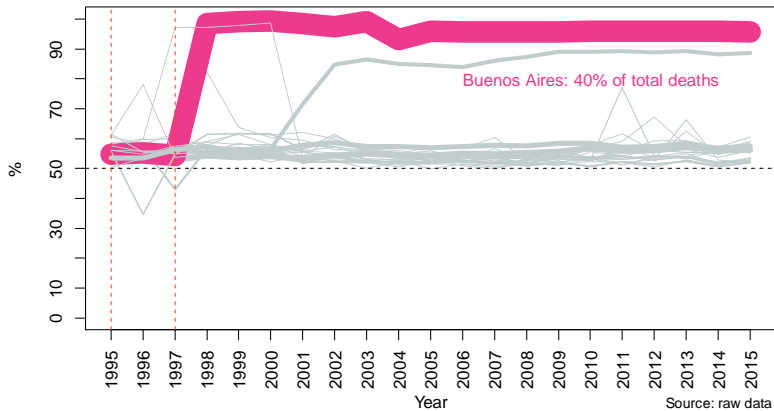
- DDM (ggb and seg methods): >99%. As good as HMD censuses

Some Indirect Measures

- DDM (ggb and seg methods): >99%. As good as HMD censuses
- Age-Heap in Pop & Deaths: reasonably indexes in HMD profile

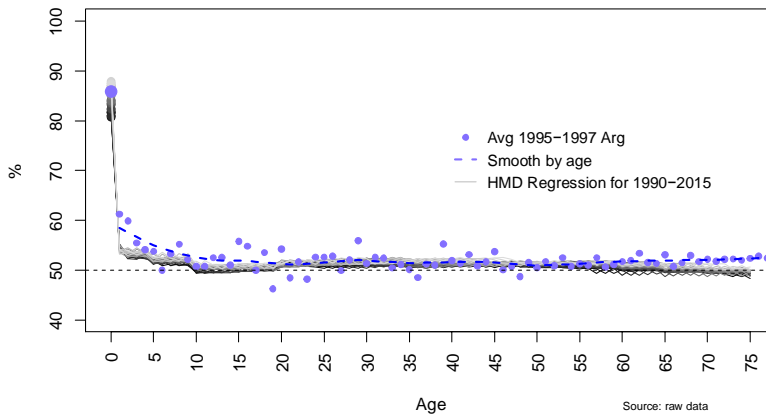
Known Cohort information

Portion of Lower Triangles by Province. Argentina



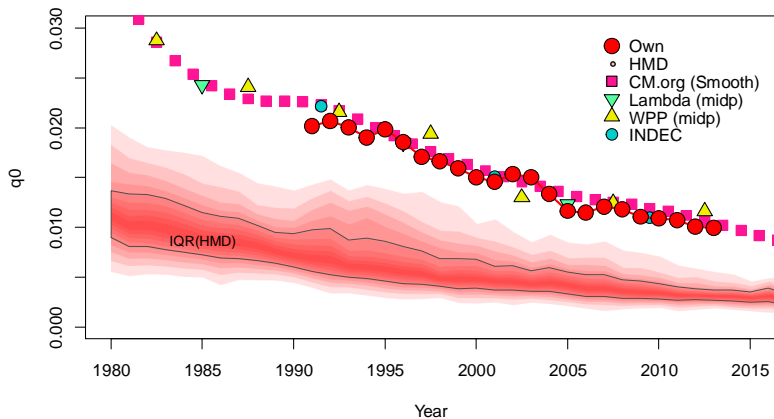
Alternative estimations

Estimations of Lower Triangule Portion. Females, Argentina



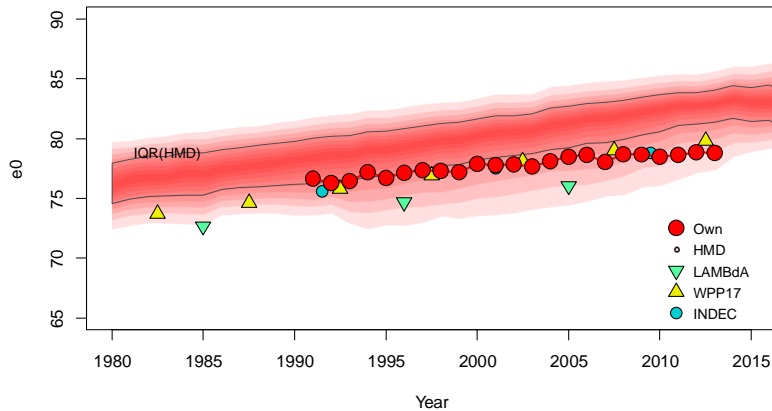
Infant Mortality

Infant mortality (q0). HMD Countries and Argentina. Females



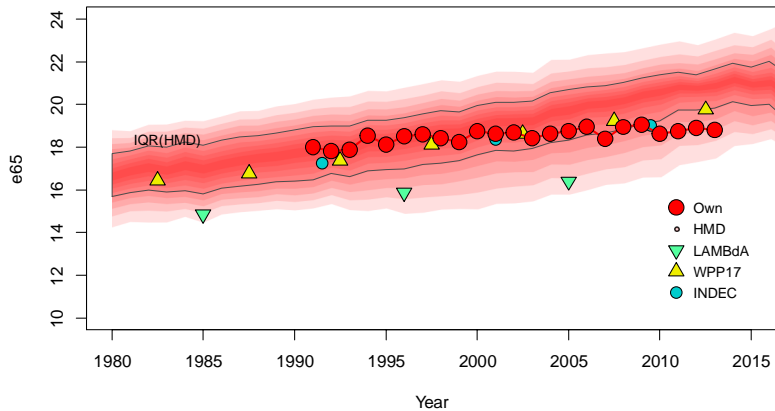
Life Expectancy at birth

Life expectancy at birth. HMD Countries and Argentina. Females



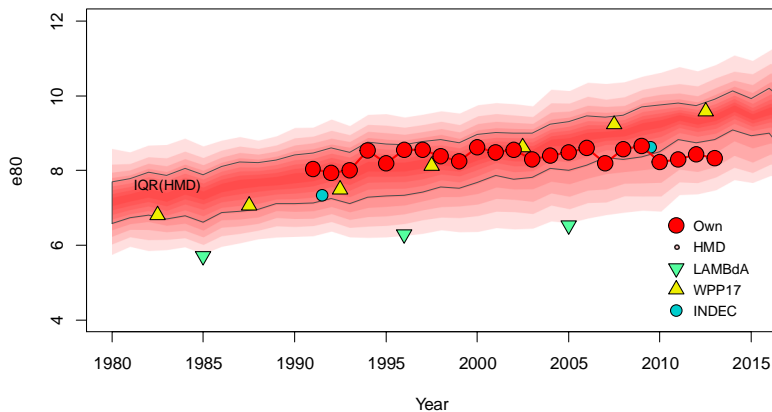
Life Expectancy at 65

Life expectancy at Age 65. HMD Countries and Argentina. Females



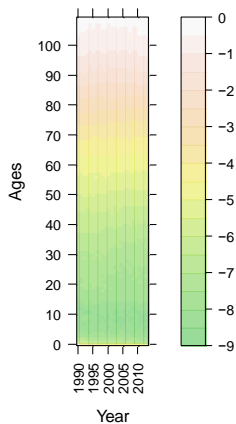
Life Expectancy at 80

Life expectancy at age 80. HMD Countries and Argentina. Females

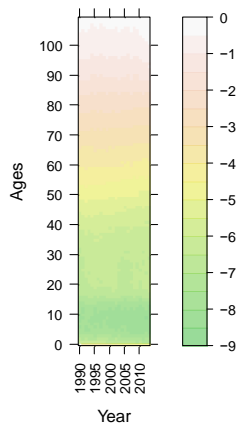


Rates

**Lexis Surface of log-rates.
Females. Argentina**

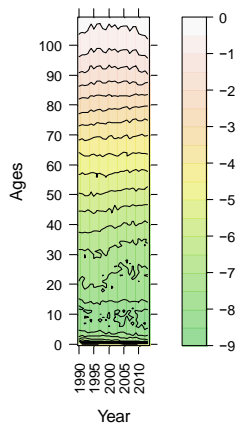


**Lexis Surface of log-rates.
Males. Argentina**

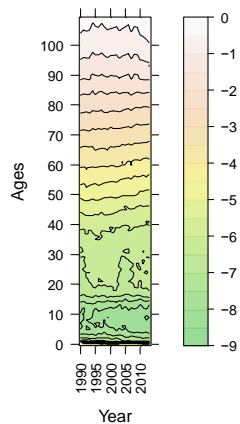


Rates

**Lexis Surface of log-rates.
Females. Argentina**

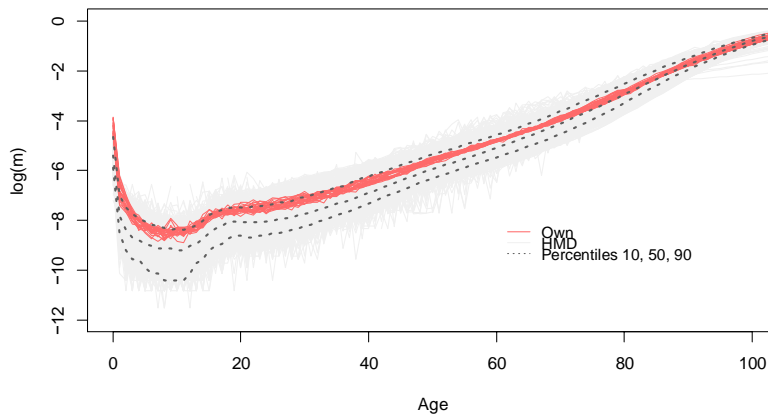


**Lexis Surface of log-rates.
Males. Argentina**



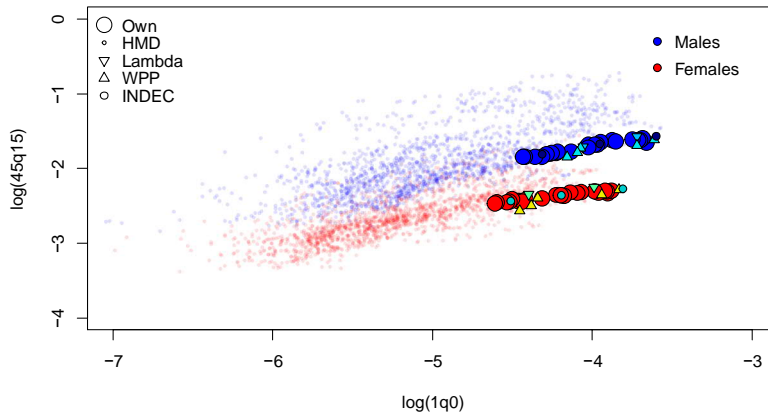
Rates compared with HMD

Mortality rates in HMD Countries and Argentina. Females. Years >1989



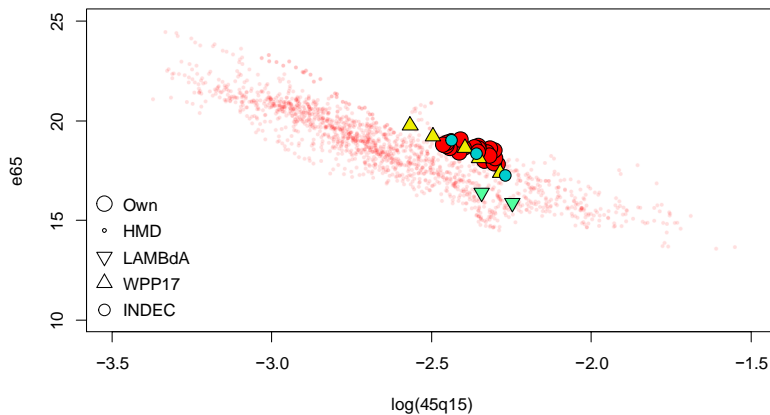
Infant and Adult

1q0 and 45q15
HMD Countries and Argentina. Years >1980



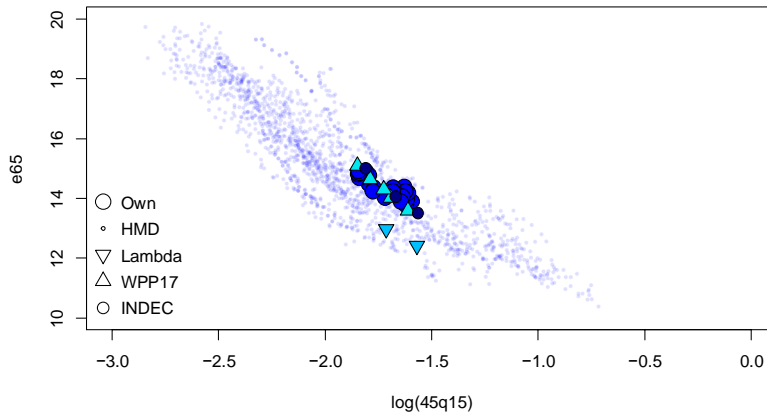
Adult and Older Ages

45q15 and e65
HMD Countries and Argentina. Females. Years>1980



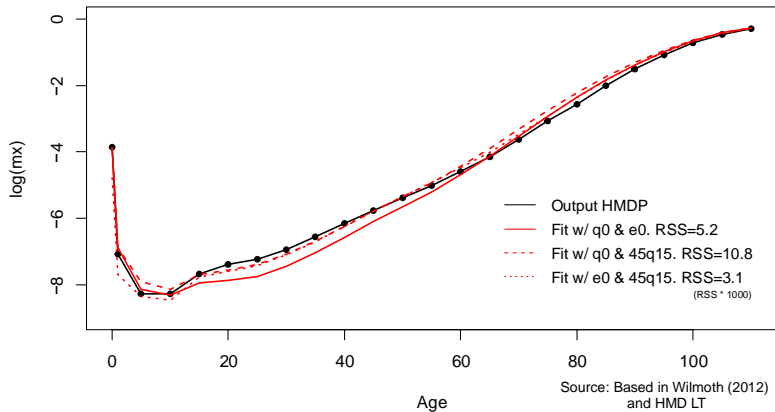
Adult and Older Ages

45q15 and e65
HMD Countries and Argentina. Males. Years>1980



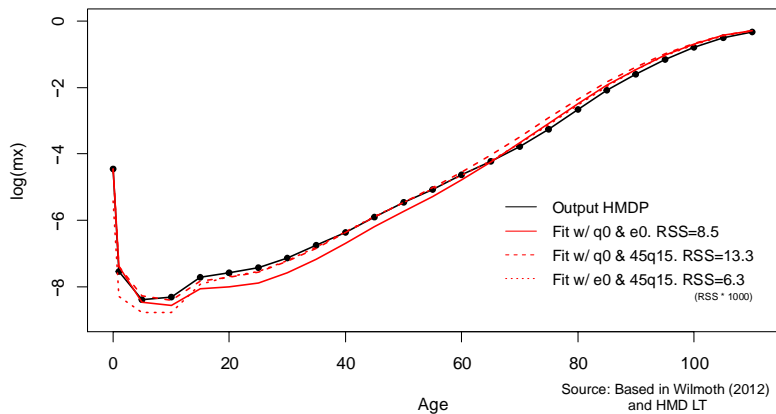
Relational Model

Fit log-quad. Females, 1990–1994



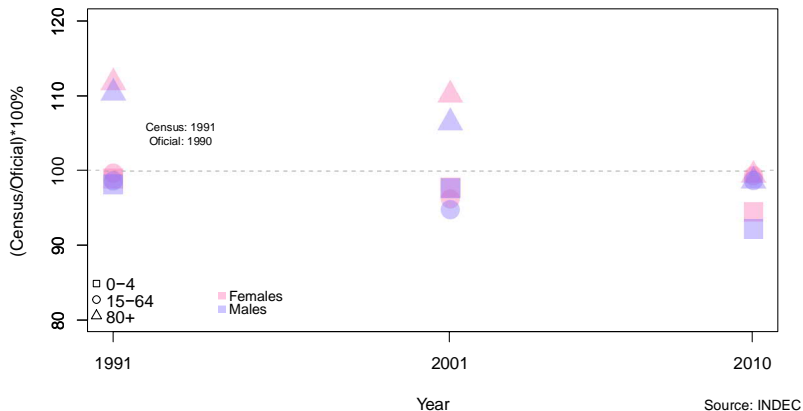
Relational Model

Fit log-quad. Females, 2005–2009



Census and Oficial Population

Census and Oficial Estimates of Population



General Omission: 2.75% in 2001, 1.99% in 2010

First Conclusion

- What we saw:

First Conclusion

- What we saw:
 - AP data seems “not bad” (except Deaths in 1990-1994)

First Conclusion

- What we saw:
 - AP data seems “not bad” (except Deaths in 1990-1994)
 - Suitable LT relations

First Conclusion

- What we saw:
 - AP data seems “not bad” (except Deaths in 1990-1994)
 - Suitable LT relations
 - Coherent with other sources (except LAMBdA in latest ages)

First Conclusion

- What we saw:
 - AP data seems “not bad” (except Deaths in 1990-1994)
 - Suitable LT relations
 - Coherent with other sources (except LAMBdA in latest ages)
 - IM might underestimated in 1990-1994

First Conclusion

- What we saw:
 - AP data seems “not bad” (except Deaths in 1990-1994)
 - Suitable LT relations
 - Coherent with other sources (except LAMBdA in latest ages)
 - IM might underestimated in 1990-1994
 - Cohort: bias by provinces

First Conclusion

- What we saw:
 - AP data seems “not bad” (except Deaths in 1990-1994)
 - Suitable LT relations
 - Coherent with other sources (except LAMBdA in latest ages)
 - IM might underestimated in 1990-1994
 - Cohort: bias by provinces
- Next...

First Conclusion

- What we saw:
 - AP data seems “not bad” (except Deaths in 1990-1994)
 - Suitable LT relations
 - Coherent with other sources (except LAMBdA in latest ages)
 - IM might underestimated in 1990-1994
 - Cohort: bias by provinces
- Next...
 - Some decision to make in Census/Oficial

First Conclusion

- What we saw:
 - AP data seems “not bad” (except Deaths in 1990-1994)
 - Suitable LT relations
 - Coherent with other sources (except LAMBdA in latest ages)
 - IM might underestimated in 1990-1994
 - Cohort: bias by provinces
- Next...
 - Some decision to make in Census/Oficial
 - Sensibility to Age-Overstatement adjustments in oldest ages

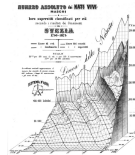
First Conclusion

- What we saw:
 - AP data seems “not bad” (except Deaths in 1990-1994)
 - Suitable LT relations
 - Coherent with other sources (except LAMBdA in latest ages)
 - IM might underestimated in 1990-1994
 - Cohort: bias by provinces
- Next...
 - Some decision to make in Census/Oficial
 - Sensibility to Age-Overstatement adjustments in oldest ages
- First Conclusion:

First Conclusion

- What we saw:
 - AP data seems “not bad” (except Deaths in 1990-1994)
 - Suitable LT relations
 - Coherent with other sources (except LAMBdA in latest ages)
 - IM might underestimated in 1990-1994
 - Cohort: bias by provinces
- Next...
 - Some decision to make in Census/Oficial
 - Sensibility to Age-Overstatement adjustments in oldest ages
- First Conclusion:
 - Raw Data seems suitable for period modelling starting in 1995

Some day...



Ci auguriamo che l'opera incominciata con pochi materiali stranieri possa essere continuata per una lunga serie d'anni, onde ritrarne più tardi tutto quel frutto che può arrecare.

Figure: Luigi Perozzo (1880)

Thanks!